

NEW BUILDS EXTENSIONS CONVERSIONS RENOVATIONS REMODELS

SELF BUILD & DESIGN

Selfbuildanddesign.com

June 2022 £5.99



FREE
MAGAZINE
BUILDING WITH
TIMBER

ADDING THE WOW FACTOR

TAKING YOUR HOME TO THE NEXT LEVEL

PET-FRIENDLY HOMES

How to keep your furry friends safe and happy

MAKING A PROFIT

5 top tips for preparing your property for sale

BUILT WITH BALES

Passive house made of straw bale panels



6 WAYS TO PREVENT MAKING A TOTAL HASH OF YOUR SELF BUILD

PRODUCT SHOWCASE

INTERNAL DOORS
FENCES AND SCREENS

4 amazing projects to inspire your dream home

KITCHEN EXTENSION

Striking timber-clad addition to 16th-century farmhouse

ENERGY-SAVING BUILD

Contemporary rural eco home stacked with the latest technology

A COUNTRY CLASSIC

Elegant country pile transformed into modern family home

NEW ECO HOUSE

Low-carbon, timber-framed house clad in stone and wood



Outdoor grill

This cast iron firepit by Hergom is a garden heater and barbecue. The robust pit is 960mm in diameter and finished with a heat-resistant paint. The large central opening makes it easy to light while its outer ring is made up of four segments, where two cast iron griddles and two grills can be combined for outdoor cooking. The ring quickly reaches the optimum temperature for searing and sizzling, and remains at temperature for some time, thanks to the thermal qualities of cast iron. The firepit comes in two versions: the tall-base design is the perfect height for alfresco cooking and comes with a steel base for log storage and stainless steel side bars for hanging tongs and spatulas; the low-base version also comes with a cast iron cooking ring finished in food-grade enamel. Prices start from £1,545. (eurostove.co.uk)

Stylish stoves

Eco Design ready, the F200 (below) and F205 (right) cast iron wood-burning stoves are available with classic long legs to suit both free-standing or in a fireplace opening, with short legs available as an accessory if needed. The F200 showcases traditional Norwegian character tracery arches, a curved top and easy air control with a single lever action. Offering a more pared-back styling, the F205 is compact and comes in a black paint finish. Both designs have a nominal heat output of 5kW and cost from £1,699 plus VAT. (lotul.co.uk)



Black brass

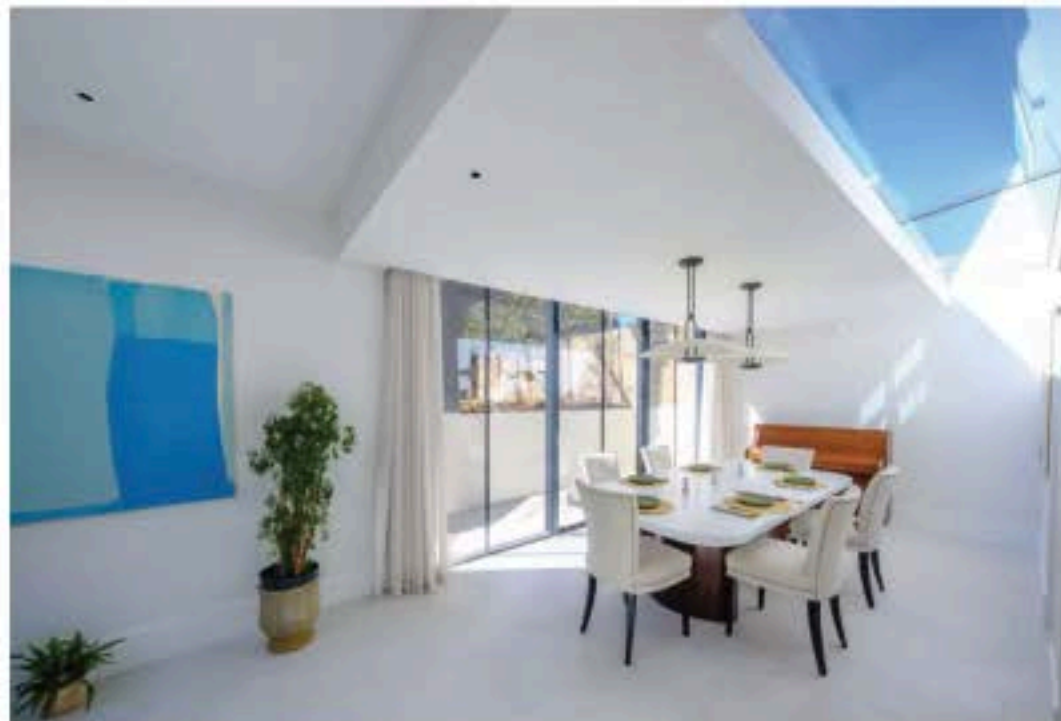
The new matt-black cabinet hardware collection from Heritage Brass includes 36 scratch- and chemical-resistant products. With a deep black hue and a bold contemporary finish, the range is available in traditional and modern cabinet pull, handle and knob designs with matching electrical accessories. Each solid brass product is electro cleaned and then powder coated for a matt effect. The hardware is then cured and baked for an even finish. Prices start from £4.83. (m-marcus.com/heritage-brass)



Beauty and the beast

The Insects Noir wallpaper collection comes from maximalist design house Carmine Lake. Stunning florals, mini beasts and a brooding black subtle geometric backdrop are combined to create a trio of Art Deco designs. Displayed here is the Anisoptera Botanicus, in which fine circles ripple behind a detailed interpretation of a dragonfly. Price: £180 per roll. (carminelake.com)





Slim-framed glazing for listed building extension

The brief for this modern extension to a Grade II-listed home in London's Notting Hill was to include high-performance glazing, while protecting the original character of the building. Glazing systems were chosen to modernise the extension and generate natural light in every angle of the extension.

A slim-framed pivot door in the kitchen provides direct access to the garden, with fixed structural glazing creating a box roof light above the opening. This minimal pivot door is the slimmest one on the market, giving the appearance of a simple casement door and only revealing its bespoke nature when opened. Two structural glass roof lights were installed within the new extension space. As well as providing plenty of natural light, the frameless lights offer stunning sky views.

Ultra-slim sliding glass doors make up an entire wall, with the frames concealed within the walls for the most minimal sightlines. The high thermal performance of the frames also means the dining area can be enjoyed all year round. (iglassuk.com)



Surge in demand for internal screen doors

With working from home now established in many jobs, Tradelink Window Solutions has seen a boom in demand for its glazed aluminium internal screens which can be used to create flexible working spaces. Replicating the look of steel screens at a fraction of the cost, the extruded aluminium, polyester powder-coated screens are made to order at Tradelink's factory in March, Cambridgeshire. The screens are perfect for creating a home office or a designated space, while also being suitable for reducing heat loss in garden rooms. Standard frames are single glazed, with toughened glass, but can be supplied with double glazing where greater acoustic and thermal performance is required and can be fabricated with single- or double-pass doors.

Brass door handles

Heritage Brass is a family-run business offering timeless solid brass architectural hardware in both traditional and modern styles. With more than 60 lever designs, the expansive range is made up of door and cabinet hardware, with designs in a range of finishes. Shown here are (clockwise from top): Alicia door handle on round rose in polished chrome: £46.22; Balmoral door knob on plate in antique brass: £59.56; Century door handle on round rose in antique brass: £81.28; Sophia door handle on round rose in matt bronze: £38.52. (m-marcus.com/heritage-brass)

