

PRESENTED BY



m.marcus
architectural hardware

Panic Exit devices



ISEO[®]
ULTIMATE ACCESS TECHNOLOGIES

Panic Exit devices



ISEO is a leader in the production and design of locking systems and access control solutions. Continuity, a creative flair and specialisation make it a symbol of quality.

The values that have inspired the production of our panic devices have always been:

Safety: Our products offer peace of mind in the homes of millions of families.

We have also been chosen by important institutions to supply our products for large scale projects.

Quality: We offer the highest standard of international certification in all markets.

Respect: For all the people who work with us every day, for the world and the cultures that populate it, for the environment in which we live.



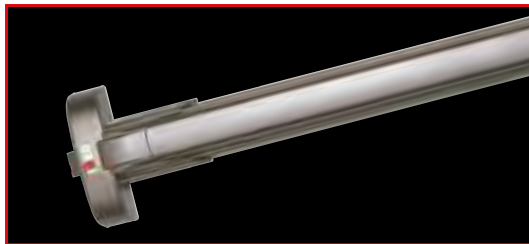
Index - To Sections

Our products cover all areas of market demand: from residential buildings to large commercial and financial complexes, accommodation and transport facilities, and critical infrastructure.



IDEA Base - Page 6

- IDEA Base Steel Page 8
- IDEA Base Zamak Page 10
- IDEA Pad Steel Page 8
- IDEA Pad Zamak Page 10



ENDUR4NCE - Page 12

- IDEA Base ENDUR4NCE Page 14
- Push ENDUR4NCE Page 14



TOUCH - Page 16

- Touch Page 18
- Push Sirena Page 20



Push Electro - Page 21-22



Trim Tronic - Page 23



Trim - Page 24-26



Accessories - Page 27-29

Exit Device Applications - Page 30-31

Rim devices

EN1125 and EN179

The search for new performance for our products (in full compliance with current regulations) has allowed us to achieve high levels of performance and quality.



CYCLIC DURABILITY OF ALL DEVICES: **500.000 CYCLES**
 All rim panic and emergency exit devices have been tested in accordance with the standards **UNI EN1125** and **UNI EN179** up to 500,000 operating cycles.
 The maximum threshold defined by the standard is 200,000 cycles.



ALL DEVICES NOW WITH **GRADE 7** DOOR WEIGHT CLASSIFICATION
 All rim panic and emergency exit devices have been tested in accordance with the requirements of the standards **UNI EN1125** and **UNI EN179** on doors with mass of more than 200 kg.

3	7	7	0	1	4	2	2	A	A
1°	2°	3°	4°	5°	6°	7°	8°	9°	10°





CERTIFICATE OF APPROVAL NO CF 5233



OPERATING TEMPERATURE: **TESTED FROM -25°C TO +60°C**

All rim panic and emergency exit devices have been tested in accordance with the requirements of the standards **UNI EN1125** and **UNI EN179** between **-25°C and +60°C**. The maximum threshold defined by the standard is from -10°C to +60°C.

ENDUR4NCE

ENDUR4NCE FINISH

The new ENDUR4NCE finish has been created to satisfy the many applications that require a long-lasting surface finish visually similar to metal. Devices with the **ENDUR4NCE** finish have been tested in compliance with the standard **UNI EN 1670**, and have reached excellent aesthetic and functional results, with up to 1600 hours of neutral salt spray (NSS) corrosion testing.

DOUBLE THE SAFETY: **PANIC EXIT FUNCTIONALITY AND ANTIBACTERIAL PROTECTION**

According to its commitment to safety, ISEO has developed pioneering solutions to safeguard the health of those using its products and, in particular, its panic exit bars - devices used extensively in public facilities and for all applications where hygiene and health protection are fundamental prerequisites, such as hospitals, clinics, crèches, schools etc.

For years, these panic exit devices have also been treated with the AntiGerm antibacterial coating, to ensure even greater safety. The effect of this antibacterial treatment is permanent, and does not require any special maintenance. It is based on the continuous release of silver ions, and remains effective for the entire lifespan of the product, even if the surface is scratched.

The action of the antibacterial treatment AntiGerm reduces bacteria level by 99% and its performance has been certified by independent laboratories according to ISO 22196 standard.



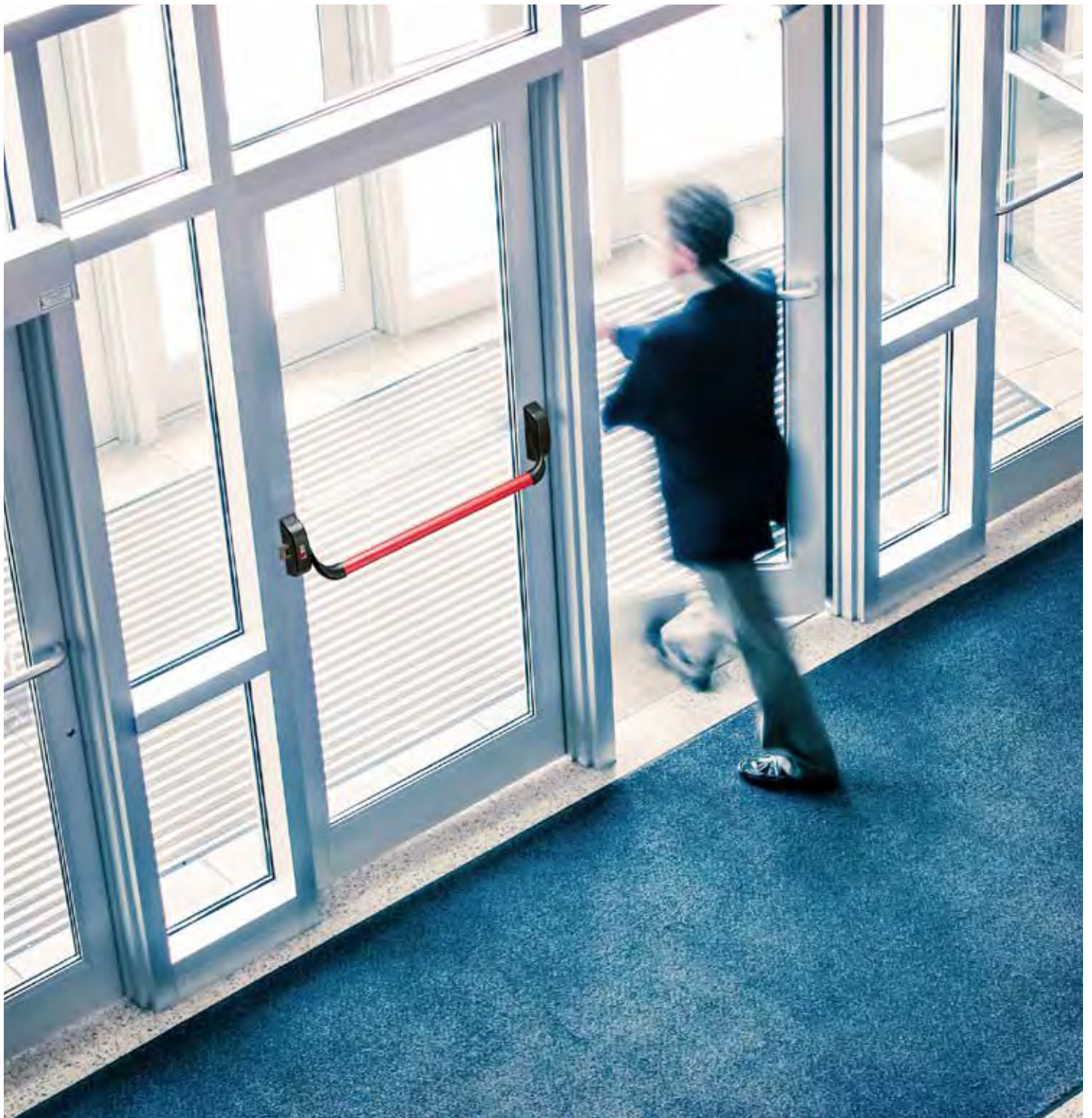
IDEA Base

Producing safety systems means ensuring the peace of mind of customers who choose us.

More than fifty years of specialisation reflect the quality of the products we offer, and the passion for what we do. The IDEA Base panic devices line is designed, developed and manufactured directly by ISEO with a single point of focus: to guarantee the highest levels of safety and reliability in accordance with the UNI EN1125 standard.

In the design of the devices, design and aesthetics were not neglected, as they are distinctive features of the IDEA Base series. They are particularly suitable for installation on glass doors and metal doors with a low profile.

The IDEA Base guarantees tried and tested performance with easy installation, modularity, versatility and a high level of safety.



Key features:



- Certificates: CE Marking according to Regulation 305/2011 CE (CPR).
- Modularity thanks to a wide range of accessories.
- Reversibility: can be installed in a right or left configuration.
- Adaptability: can be adapted to any type of frame and configuration (aluminium, PVC, wood, etc.).
- Possibility of installation on glass doors thanks to the BELVEDERE Kit.
- Configurable: for installation on single leaf or double leaf doors.
- Reliability: the entire range has been tested according to the parameters required by the UNI EN1125 standard, up to 500,000 cycles.
- Ease of installation: three different fixing possibilities depending on the frame.
- Fast to install: they have the automatic spring-action rod attachment system, without screws.
- Solidity, with an oval anti-rotation push bar in steel.
- Finishes: black, metal grey, ENDUR4NCE, with the application of the ANTIGERM antibacterial treatment.
- Special versions. PVD-inox.
- Can be integrated with ISEO access control systems.
- Signage not included.





Code



IDEA Base steel latches for fire doors



Order Bar separately

“IDEA Base” panic exit device, **MODULAR**, reversible. Prearranged for double and triple lateral locking.

Steel latch with self-locking function. Suitable for **FIRE DOORS**. Keep 9410011*.

Prearranged for top/bottom rods. Caps for top/bottom holes. Nylon spacer for external control.

Template. Assembly instructions.

Matching accessories: see configurator.

PAINTED BLACK	IS941-4000504	✓
PAINTED METAL GREY	IS941-4000704	✓



Code

Retail Price



IDEA Base steel pad



Emergency exit device “Pad” operated by means of **PUSHING PLATE, FOR FIRE RESISTANT DOORS**, reversible. Prearranged for double and triple lateral locking. **SELF-LOCKING STEEL LATCH**, keep 94100110.

Nylon fixing spacer. Templates. Assembly instructions. Fixing screws. **Can be used in conjunction with:**

External control 9401* - External cylinder 859000857/9 - Electric striker 56800*0 - Keeps 94100*

LATERAL LOCKING

PAINTED BLACK for FIRE RESISTANT DOORS	IS946-1000504	✓
---	----------------------	---

MODULAR LOCKING

PAINTED BLACK	IS946-4000504	✓
PAINTED METAL GREY	IS946-4000704	✓



Code



Accessories



Pair of painted latches for panic exit devices **“IDEA Base”** and **“Push”**. Top and bottom vertical locking.
Self-locking steel latch suitable for fire resistant doors.

PAINTED BLACK	IS941-0201504	✓
PAINTED METAL GREY	IS941-0201704	✓



Pair of painted latches for panic exit devices **“IDEA Base”** and **“Push”**. Top and bottom lateral locking.
Self-locking steel latch suitable for fire resistant doors. 1

PAINTED BLACK	IS941-0203504	✓
PAINTED METAL GREY	IS941-0203704	✓



Rods and covers.
Cap for bar lateral latch.

For doors with maximum height mm 2400 painted black	IS941-00205	✓
For doors with maximum height mm 2400 painted metal grey	IS941-00207	✓
For doors with maximum height mm 3400 painted black	IS941-00305	✓
For doors with maximum height mm 3400 painted metal grey	IS941-00307	✓

Horizontal oval bar for panic exit devices “IDEA Base” - “IDEA Bolt” . Length mm 1130		
STAINLESS STEEL	IS945-922	✓
ENDUR4NCE	IS945-92R	✓
PAINTED METAL GREY	IS945-927	✓
PAINTED RED	IS945-928	✓
PAINTED GREEN RAL 6029	IS945-929	✓

Horizontal oval bar for panic exit devices “IDEA Base” - “IDEA Bolt” . Length mm 1330		
STAINLESS STEEL	IS945-932	✓
ENDUR4NCE	IS945-93R	✓
PAINTED METAL GREY	IS945-937	✓
PAINTED RED	IS945-938	✓

Before installation on fire/smoke resistant doors, please check compatibility of the accessories.



Code



IDEA Base zamak latches



Order Bar separately

“IDEA Base” panic exit device, reversible. Painted black. Nylon spacer for external control. Template. Strike plates supplied. Assembly instructions. **Matching accessories: see configurator.**

MODULAR Prearranged for top/bottom rods		
Zamak latch without self-locking device - BLACK	IS941-4000505	✓
Zamak latch without self-locking device - GREY	IS941-4000705	✓

IDEA Base zamak pad



Emergency exit device “Pad” operated by means of **PUSHING PLATE**, reversible. Nylon fixing spacer. Templates. Assembly instructions. Fixing screws.

Can be used in conjunction with:

External control 9401* - External cylinder 859000857/9 - Electric striker 56800*0 - Keeps 94100*

LATERAL LOCKING		
ZAMAK LATCH WITHOUT SELF-LOCKING FUNCTION. Painted metal grey	IS946-1000705	✓



Code



Accessories



Pair of latches for **"IDEA Base"** panic exit devices. Painted black.
Top/bottom vertical locking. Zamak latch without self-locking function.
Only for panic exit doors.

BLACK

IS941-0201505



GREY

IS941-0201705



Pair of latches for **"IDEA Base"** panic exit devices. Painted black.
Vertical locking. Zamak latch without self-locking function.
Only for panic exit doors.

BLACK

IS941-0203505



GREY

IS941-0203705



Rods, Covers & Strikes 2400mm - BLACK

IS941-00205



Rods, Covers & Strikes 2400mm - GREY

IS941-00207



Rods, Covers & Strikes 3400mm - BLACK

IS941-00305



Rods, Covers & Strikes 3400mm - GREY

IS941-00307



Blanking Plate (use when 2 point required instead of 3) - BLACK

IS941-00705



Blanking Plate (use when 2 point required instead of 3) - GREY

IS941-00707



Extra Steel lateral keep (for use on steel doors with seals) - BLACK

IS941-00145



Extra Steel lateral keep (for use on steel doors with seals) - GREY

IS941-00147



• Suitable for use with UK, Pullman & INOX panic exit devices



LONG CENTRAL BAR 1130MM - GREY

IS945-927



LONG CENTRAL BAR 1130MM - RED

IS945-928



• Suitable for use with UK, Pullman & INOX panic exit devices



LONG CENTRAL BAR 1300MM - GREEN

IS945-929



• Suitable for use with UK, Pullman & INOX panic exit devices

ENDUR4NCE

Superior corrosion resistance

The ENDUR4NCE finish combined with the AntiGerm antibacterial treatment makes ISEO panic exit devices ideal for installation in particularly corrosive environmental conditions, in public facilities and for all applications where hygiene and safeguarding health are fundamental prerequisites, such as: hospitals, clinics, nursing

homes, crèches and nursery schools.

The superior corrosion resistance of the visible components of ISEO rim type panic exit devices is matched by the latches in stainless steel, while the self-locking systems on all latches increases burglary resistance.

ENDUR4NCE



Key features:

The ENDUR4NCE finish is applied in a 3-step process:

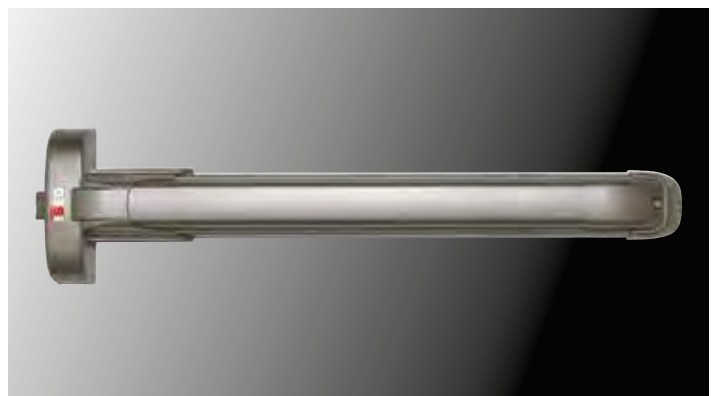
- With a CROMITATE PRIMER layer.
- An initial layer of powder coat paint.
- A second coat of liquid based paint combined with the ANTIGERM permanent antibacterial treatment.
- Signage not included.



In-house testing conducted in compliance with the standard UNI EN 1670 demonstrate the excellent performance of this finish, which resists up to 1000 hours of neutral salt spray (NSS) corrosion testing.



ENDUR4NCE





Code



IDEA Base ENDUR4NCE



“IDEA Base” panic exit device, **MODULAR**, reversible, **ENDUR4NCE** finish. Prearranged for double and triple lateral locking.
Self-locking stainless steel latch, suitable for fire resistant doors. Supplied with keeps. Prearranged for top-bottom rods.
Top/bottom caps. Nylon spacer for external control. Template.
Assembly instructions.
Matching accessories: see configurator.

IS941-4000R04



Code



Push ENDUR4NCE



“Push” panic exit device, **MODULAR REVERSIBLE**, **FINISH ENDUR4NCE** prearranged for rods.
Can be shortened to mm 330. Self-locking stainless steel latch, suitable for **FIRE RESISTANT** doors.
Top/bottom hole caps. Strike plates supplied. Assembly instructions.
Matching accessories: see configurator.

Length mm 840	IS942-4084RRT	✓
Length mm 1170	IS942-4117RRT	✓
Length mm 1300	IS942-4130RRT	✓



Code



Accessories



Pair of latches with **ENDUR4NCE** finish for “**IDEA Base**” panic exit devices. Top/bottom vertical locking.
Self-locking stainless steel latch suitable for fire resistant doors.
Supplied with keeps.
Fixing screws.

IS941-0201R04



Pair of latches with **ENDUR4NCE** finish for “**IDEA Base**” panic exit devices. Vertical locking
Self-locking stainless steel latch suitable for fire resistant doors.
Supplied with keeps.
Fixing screws.

IS941-0203R04



Pair of latches with **ENDUR4NCE** finish for “**IDEA Base**” panic exit devices. Vertical/Top locking
Self-locking stainless steel latch suitable for fire resistant doors.
Supplied with keeps.
Fixing screws.

IS941-0204R04

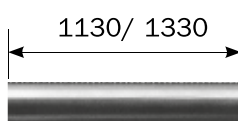


ENDUR4NCE finish rods and covers for “**IDEA Base**”.
One keep for two wings, without spacers. **Cap for pushbar lateral latch.**
For doors with maximum height mm 2400.
For doors with maximum height mm 3400.

IS941-0020R



IS941-0030R



ENDUR4NCE finish **horizontal** oval bar for panic exit devices “**IDEA Base**”
Length mm 1130.
Length mm 1330.

IS945-92R



IS945-93R



Before installation on fire/smoke resistant doors, please check compatibility of the accessories.

TOUCH

The Touch panic device allows ease of installation, reversibility and convenience thanks to a wide range of accessories available even in case of installation of different models in the same environment.

Its clean line offers an aesthetic harmony with the bars of the IDEA series.

The minimum footprint and reusability are firm points, without neglecting the highest levels of safety and reliability in

accordance with the UNI EN1125 standard.

Escape routes, in addition to being a guarantee for the safety of people in the event of fire or alarm, can be a critical point for the security of the environments and the goods contained in them.

If not properly monitored, they are in fact the ideal way to escape from the premises with stolen goods or for unwanted intrusions.



Key features:

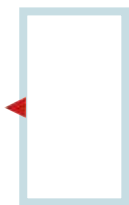
- Anti – thrust.
- Pre-set for manual hold open device.
- Reversibility: can be installed in a right or left configuration.
- Pre-set for micro switch.
- Fast and easy to install reducing labour time.
- Attractive aesthetic design.
- Rounded edges for safer usage
- No exposed moving parts.
- Compatible with any ISEO external access device ORDERED SEPARATELY
- Signage not included.



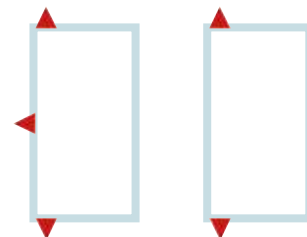
Push Sirena [See page 20]



Panic exit devices



LATERAL FIXING



LATERAL AND VERTICAL FIXING VERTICAL 2 POINT FIXING

Touch



Single Panic Latch

Ref: **IS942-41175VT**

Finish: **BLACK/GREEN**

- For use on single doors, or as active leaf on double rebated door sets.
- Bar supplied at 1165mm width, can be shortened to 330mm
- EN-1125:2008

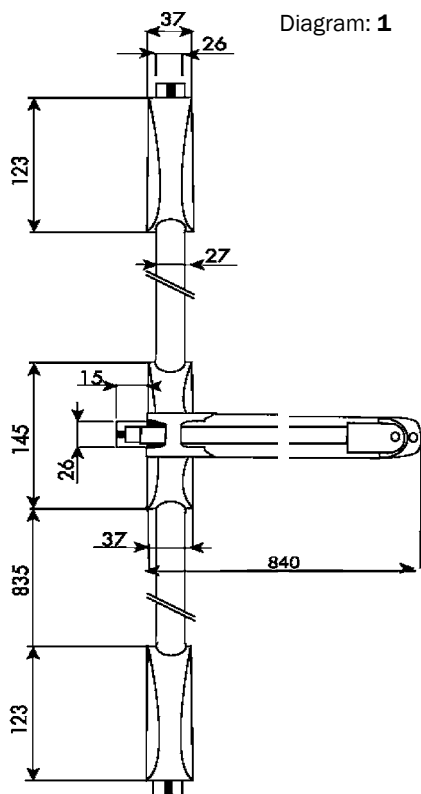


Diagram: 1

3 Point Vertical Emergency Exit Device

Ref: **IS942-30845VT**

Finish: **Black/Green**



- For use on single doors, or as passive leaf on double rebated door sets
- Bar supplied at 840mm width, can be shortened to 330mm
- Suitable for doors up to 2245mm in height, for taller doors add rods and covers set, IS941-00305 (up to 3400mm)
- EN-1125:2008





Code



Touch



“Push” panic exit device, **MODULAR REVERSIBLE**, prearranged for rods. Can be shortened to mm 330. Self-locking latch, suitable for **FIRE RESISTANT** doors. Top/bottom hole caps. Strike plates supplied. Assembly instructions. **Matching accessories: see configurator.**

Length mm **1300**

IS942-413058T



Pair of painted latches for panic exit devices “**IDEA Base**” and “**Push**”. Top and bottom vertical locking. Self-locking steel latch suitable for fire resistant doors.

PAINTED BLACK

IS941-0201504



Pair of painted latches for panic exit devices “**IDEA Base**” and “**Push**”. Top and bottom lateral locking. Self-locking steel latch suitable for fire resistant doors.

PAINTED BLACK

IS941-0203504



Rods and covers. One keep for two wings, without spacers. **Cap for bar lateral latch.**

For doors with maximum height mm 2400 PAINTED BLACK

IS941-00205



For doors with maximum height mm 3400 PAINTED BLACK

IS941-00305



Push Sirena

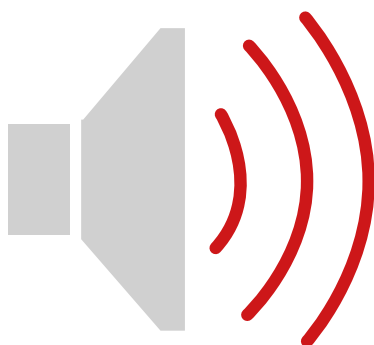
Panic device with acoustic signal, which avoids complicated and expensive installations

Push Sirena is installed as a traditional panic exit device but has an acoustic alarm: when it is activated, it immediately detects any unauthorized opening of the escape route door. Therefore, it represents the ideal solution for shops, small warehouses and all places where escape routes need constant monitoring. Through a selector operated by a key

half-cylinder the user can program the functions and choose the device status, namely: ON, OFF and BREAK (courtesy function allowing exit without triggering the alarm). If the bar is pressed and the alarm is ON, the powerful siren emits a strong acoustic signal (90dB). The device LEDs show the current status as well as the battery status.

Key features:

- Courtesy function allowing exit without alarm.
- Alarm reset by key only.
- Acoustic and LED signals showing the device and battery status.
- Powered by 2 AA alkaline batteries. (over 2 years of life without alarms)
- 3-level battery charge indicator.
- Selector compatible with European half-cylinders (size 30+10 with 8-position DIN cam).



To order Push Sirena use the following order codes:



Sirena Attachment Grey : IS942-00093

Sirena Attachment Black : IS942-00095

Please note that ISEO Touch Bar is ordered separately

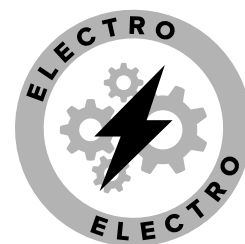
Device Status (Key operated)

- OFF:
the bar can be pressed without triggering the alarm.
- ON:
the alarm, both acoustic and visual, comes into operation when the bar is pressed.
- Break or courtesy function:
a temporary status (5 sec.) within the ON status allowing exit without triggering the alarm.
- Ongoing alarm:
when the alarm is ON and the bar is pressed, the device emits a strong acoustic signal and a red LED flashes.

Push Electro

INTELLIGENT MOTORISATION

Push Electro is much more than a simple panic device: it incorporates intelligent motorisation and strictly complies with the EN 1125 standard. Thanks to the integration of a state-of-the-art motor, this device offers a motorised opening functionality that facilitates access and ensures peace of mind and freedom of movement for all users.



Key features:

- Motorised opening
- Equipped with self-locking steel latchbolts.
- Allows continuous monitoring.
- Compatibility with ISEO Access Control software.
- Can be operated by pressing buttons or switches.
- Designed to integrate perfectly with panic doors in any context.



OPERATING MODES

Push Electro offers several operating modes to suit every security need:

REMOTE OPENING

A simple touch is enough to activate the device, which opens and remains active for the preset courtesy time. This is ideal for high-traffic environments where efficiency is crucial.

HOLD-OPEN

In situations where it is necessary to hold the door open for an extended period of time, the hold-open function allows the device to remain open until it is returned to the closed position. It is important to note that this function should not be used on fire-resistant doors to ensure compliance with safety regulations.





Code

Anti
GERM

Push Electro steel latches



"Push Electro" panic exit device, **MODULAR REVERSIBLE**, prearranged for rods.

The door opens by mechanically pressing the bar or by enabling the on-board motor.

Shortenable to mm 600. Self-locking latch, suitable for **FIRE RESISTANT** doors.

Top/bottom hole caps. Instructions, strike plates, fixing screws and 5 meters connection cable supplied.

To be ordered separately:

Cable tube: IS94403*10E

Power supply: IS94403000E

Length mm 840 . Chassis and bar painted ENDUR4NCE	IS94M4084RRT	✓
Length mm 840 . Chassis painted BLACK, bar painted RED	IS94M408458T	✓
Length mm 840 . Chassis and bar painted METAL GREY	IS94M408477T	✓
Length mm 1170 . Chassis and bar painted ENDUR4NCE	IS94M4117RRT	✓
Length mm 1170 . Chassis painted BLACK, bar painted RED	IS94M411758T	✓
Length mm 1170 . Chassis and bar painted METAL GREY	IS94M411777T	✓
Length mm 1300 . Chassis and bar painted ENDUR4NCE	IS94M4130RRT	✓
Length mm 1300 . Chassis painted BLACK, bar painted RED	IS94M413058T	✓
Length mm 1300 . Chassis and bar painted METAL GREY	IS94M413077T	✓



MOTOR retrofit KIT for installation on the rim Push range (excluding the Bolt versions).

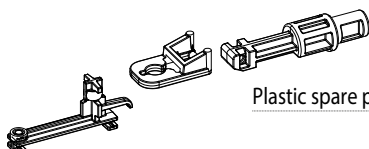
IMPORTANT: Check the applicable limits for the minimum distance for housing the motor module, given in the product instructions.

Matching accessories to be ordered separately:

Cable tube: IS94403*10E

Power supply: IS94403000E

PUSH ELECTRO MOTOR RETROFIT KIT	IS94M000010	✓
---------------------------------	--------------------	---



Plastic spare parts for Push Electro motorised device	IS0000A00243	
---	---------------------	--

Electronic external control for Panic devices with access control function

The external electromechanical control Trim-Tronic for panic and emergency devices is part of the range of accessories for rim devices.

It can be combined with all ISEO rim panic and emergency devices

in all configurations and locking points. It allows access control both mechanically with key and handle, and electronically from remote. Trim-Tronic has achieved the IPX5 protection class which allows applications even in outdoor environments.

Key features:

- Usable with ISEO mechanical rim lock panic exit bars with 1, 2 and 3 latch points (including at top and/or bottom of door).
- Handle enabled temporarily with an remote electrical control signal (button 1):
 - pulses shorter than 6 seconds in duration enable the handle for 6 seconds;
 - pulses longer than 6 seconds in duration enable the handle for the entire duration of the pulse.
- The handle may also be enabled by inserting, turning and removing the mechanical key.
- An electrical control (button 2) may be used to disable use of the mechanical



INSTALLATION IN OUTDOOR APPLICATIONS
 With a **protection rating of IPX5*** (casing offering protection against water spray). The **Trim-Tronic** control is also suitable for outdoor applications.



Trim External control

All compatible with any ISEO Panic Exit Device featured within this publication

The Trim external control for panic and emergency devices is part of the range of accessories for rim devices. It can be combined with all ISEO rim panic and emergency devices in all configurations and locking points. It has an anti-vandal system and is available in black, and metal grey, Endur4nce (metal-like finish).

It can be provided with a status signalling microswitch, an open-door key anti-removal device and a lowered handle, perfect for

industrial entrance doors. The special AntiGerm antibacterial treatment (only in painted versions) releases silver ions for the entire life of the product: it requires no maintenance and makes this device perfect for being fitted in buildings in which hygiene and health protection are important and essential.

The Trim external control is made in compliance with EN1125 and EN179 standards.

Key features:

- High durability tested.
- Aesthetically designed

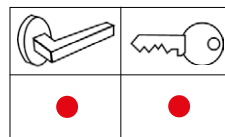
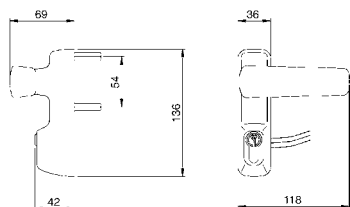




Code

Anti
GERM

Trim



COM	NO	NC
COM	NO	NC
V max	48V AC/DC	
I max	1 A	
IP	IP67	

Lever Handle With 5 Pin Cylinder & Micro Switch

Can be used with any 40mm euro single cylinder

Lever fitted with Anti-Vandalism feature

Lever fitted with Microswitch

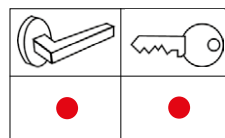
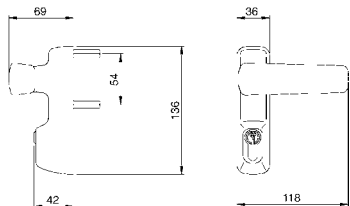
PAINTED BLACK

IS940-11015T



PAINTED METAL GREY

IS940-11017T



Lever Handle With 5 Pin Single Cylinder

Can be used with any 40mm euro single cylinder

Lever fitted with Anti-Vandalism feature

PAINTED ENDUR4NCE

IS940-1100RT

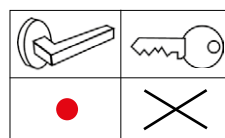
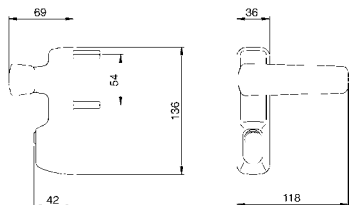
PAINTED BLACK

IS940-11005



PAINTED METAL GREY

IS940-11007



Lever Handle Without Cylinder

PAINTED BLACK

IS940-14005



PAINTED METAL GREY

IS940-14007

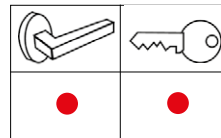
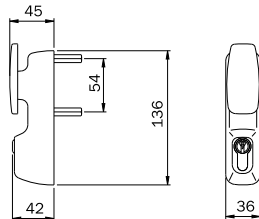




Code

Anti
GERM™

Trim



Vertical Lever Handle With 5 Pin Cylinder

Can be used with any 40mm euro single cylinder

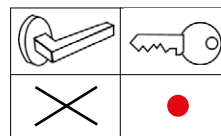
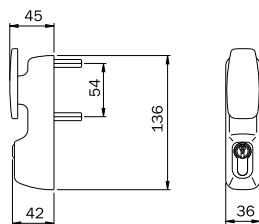
PAINTED BLACK

IS940-12005



PAINTED METAL GREY

IS940-12007



FIXED Knob With 5 Pin Cylinder

Can be used with any 40mm euro single cylinder

Fixed lever design

Requires key after every action

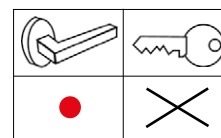
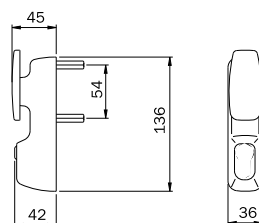
PAINTED BLACK

IS940-13005



PAINTED METAL GREY

IS940-13007



FIXED Knob Without Cylinder

PAINTED BLACK

IS940-15005



PAINTED METAL GREY

IS940-15007

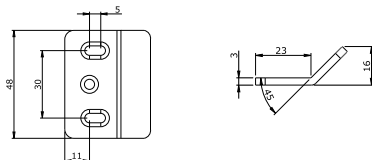




Code

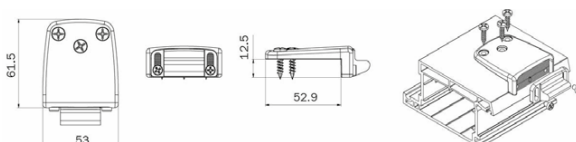


Panic Hardware Accessories **Keeps**



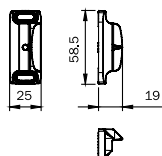
Steel lateral keep for panic exit devices **"IDEA Base", "Push", "Pad" and "Bolt"**
also for FIRE RESISTANT doors.

PAINTED BLACK	IS941-00145	✓
PAINTED WHITE	IS941-00144	✓
PAINTED METAL GREY	IS941-00147	✓



Adjustable PVD keep for panic exit devices **"IDEA Base" and "Push"** top or lateral locking
painted with zamak slide. For single and double doors. Suitable for frames with a rebate from
mm 14 to mm 24. Fixing screws. Instructions.

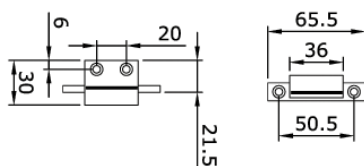
PAINTED BLACK	IS941-00250	✓
PAINTED WHITE	IS941-00254	✓
PAINTED METAL GREY	IS941-00257	✓



Keep for panic exit devices **"IDEA Base" and "Push"**, with top and lateral locking, zamak.

For metal and wooden frames

BLACK ZINC-PLATED	IS941-00090	✓
PAINTED METAL GREY	IS941-00097	✓
PAINTED WHITE	IS941-00094	✓

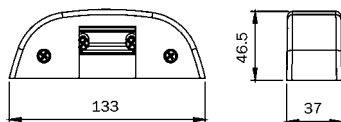


Nylon lateral keep for panic exit devices **"Push Bar"**.

For wooden or PVC doors.

IS949-856	✓
-----------	---

Panic Hardware Accessories



Electric Strike

- For use with Pullman and Touch panic exit devices
- 12V - 15 Watt (AC)
- For INOX finish add cover plate IS568-0012
- Anti-thrust feature

PAINTED BLACK

IS568-0000

PAINTED METAL GREY

IS568-0007



MICRO SWITCH

IS941-00060

- Mechanisms for UK, Pullman and INOX, are pre-set for this microswitch
- Used to detect door opening • Can be used with security system



MICRO-SWITCH FOR TOUCH DEVICES

IS942-00060

- Mechanisms for Touch panic are bar pre-set for this microswitch
- Used to detect door opening • Can be used with security system



THERMO-EXPANDING GASKET KIT

IS940-00030

- Suitable for use with UK, Pullman, Touch & INOX devices
- For use with smoke doors



HOLD OPEN DEVICE

IS941-00070

- Use in bracket of UK, Pullman & INOX panic exit devices
- Mechanically holds panic exit device in 'open' mode



FIXING PLATE FOR CENTRAL MECHANISM

IS941-00040

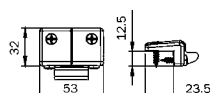
- Suitable for use with UK, Pullman, Touch & INOX panic exit devices
- For use with steel doors



FIXING PLATE FOR TOP & BOTTOM LATCHES OR BOLTS

IS941-00050

- Suitable for use with UK, Pullman, Touch & INOX panic exit devices



LATERAL KEEP FOR PVCu DOORS - BLACK

IS941-00150

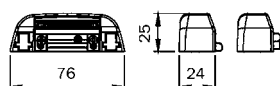
LATERAL KEEP FOR PVCu DOORS - GREY

IS941-00157

LATERAL KEEP FOR PVCu DOORS - PAINTED WHITE

IS941-00254

- Use in bracket of UK Pullman & INOX panic exit devices
- For use with profiles with an overlap of 14 to 24mm



LATERAL KEEP - BLACK

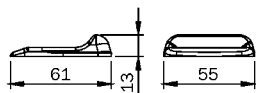
IS941-00130

LATERAL KEEP - GREY

IS941-00137

- Use in bracket of UK Pullman & INOX panic exit devices
- For use with profiles with an overlap up to 11mm

Panic Hardware Accessories



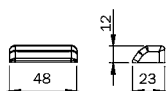
- Suitable for Pullman and Touch panic exit devices

FLOOR KEEP - BLACK

IS941-00120

FLOOR KEEP - GREY

IS941-00227



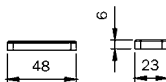
- Suitable for use with UK, Pullman, Touch & INOX panic exit devices
- For lateral latch, single or double

SIDE STRIKER - BLACK

IS941-00110

SIDE STRIKER - GREY

IS941-00117



- Suitable for use with UK, Pullman, Touch & INOX panic exit devices

LATERAL STRIKER FOR DOUBLE DOORS - BLACK

IS941-00100

LATERAL STRIKER FOR DOUBLE DOORS - GREY

IS941-00107



- Suitable for use with all Ranges

BLANKING PLATES FOR LATCH PIECE - BLACK

IS941-00705

BLANKING PLATES FOR LATCH PIECE - GREY

IS941-00707




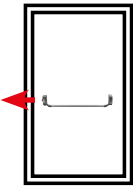
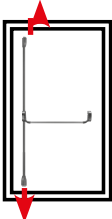
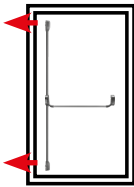
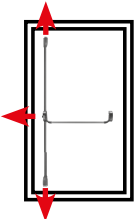
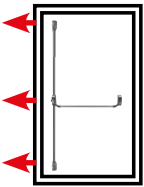
- Suitable for Touch Range panic exit devices only

BLANKING PLATES FOR RODS


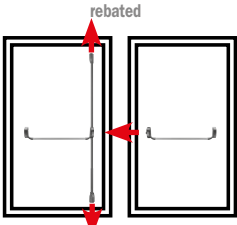
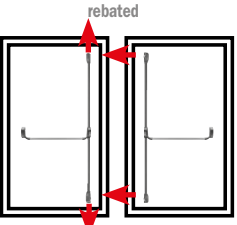
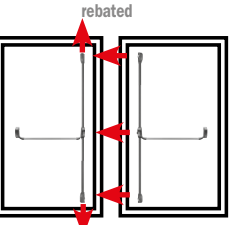
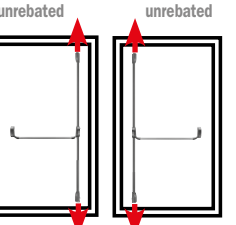
IS-KW50395C



Application - Single Door

	 <p>LATERAL FIXING</p>	 <p>VERICAL 2 POINT FIXING</p>	 <p>LATERAL 2 POINT FIXING</p>	 <p>3 POINT FIXING LATERAL/VERTICAL</p>	 <p>LATERAL 3 POINT FIXING</p>
<p>IDEA Base Zamak</p>	<p>IS941-4000505 IS945-928</p>	<p>IS941-4000505 IS945-928 IS941-00205 IS941-0201505 IS941-00705 Blanking Piece converts 3 to 2 point</p>	<p>IS941-4000505 IS945-928 IS941-00205 IS941-0203505 IS941-00705 Blanking Piece converts 3 to 2 point</p>	<p>IS941-4000505 IS945-928 IS941-00205 IS941-0201505</p>	<p>IS941-4000505 IS945-928 IS941-00205 IS941-0203505</p>
<p>IDEA Base Steel</p>	<p>IS941-4000504 IS945-928</p>	<p>IS941-4000504 IS945-928 IS941-00205 IS941-0201504 IS941-00705 Blanking Piece converts 3 to 2 point</p>	<p>IS941-4000504 IS945-928 IS941-00205 IS941-0203504 IS941-00705 Blanking Piece converts 3 to 2 point</p>	<p>IS941-4000504 IS945-928 IS941-00205 IS941-0201504</p>	<p>IS941-4000504 IS945-928 IS941-00205 IS941-0203504</p>
<p>TOUCH</p>	<p>IS942-41175VT</p>	<p>IS942-30845VT IS941-00705 Blanking Piece converts 3 to 2 point</p>	<p>IS942-41175VT IS941-00205 IS941-0203504 IS941-00705 Blanking Piece converts 3 to 2 point</p>	<p>IS942-30845VT</p>	<p>IS942-41175VT IS941-00205 IS941-0203504</p>
<p>ENDUR4NCE</p>	<p>IS941-4000R04 IS945-92R</p>	<p>IS941-4000R04 IS945-92R IS941-0020R IS941-0201R04 IS941-00707 Blanking Piece converts 3 to 2 point</p>	<p>IS941-4000R04 IS945-92R IS941-0020R IS941-0203R04 IS941-00707 Blanking Piece converts 3 to 2 point</p>	<p>IS941-4000R04 IS945-92R IS941-0020R IS941-0201R04</p>	<p>IS941-4000R04 IS945-92R IS941-0020R IS941-0203R04</p>

Application - Double Door

	 <p>LATERAL TOP/BOTTOM & VERTICAL 1 POINT FIXING</p>	 <p>LATERAL TOP/BOTTOM & VERTICAL 2 POINT FIXING</p>	 <p>LATERAL TOP/BOTTOM & VERTICAL 3 POINT FIXING</p>	 <p>LATERAL TOP/BOTTOM DOUBLE FIXING ON NON-REBATED DOORS</p>
<p>IDEA Base Zamak</p>	<p>IS941-4000505 (x2) IS945-928 (x2) IS941-00205 IS941-0201505 IS941-00705 Blanking Piece converts 3 to 2 point</p>	<p>IS941-4000505 (x2) IS945-928 (x2) IS941-00205 (x2) IS941-0203505 IS941-0201505 IS941-00705 (x2) Blanking Piece converts 3 to 2 point</p>	<p>IS941-4000505 (x2) IS945-928 (x2) IS941-00205 (x2) IS941-0203505 IS941-0201505 IS941-00705 Blanking Piece converts 3 to 2 point</p>	<p>IS941-4000505 (x2) IS945-928 (x2) IS941-00205 (x2) IS941-0201505 (x2) IS941-00705 (x2) Blanking Piece converts 3 to 2 point</p>
<p>IDEA Base Steel</p>	<p>IS941-4000504 (x2) IS945-928 (x2) IS941-00205 IS941-0201504 IS941-00705 Blanking Piece converts 3 to 2 point</p>	<p>IS941-4000504 (x2) IS945-928 (x2) IS941-00205 (x2) IS941-0203504 IS941-0201504 IS941-00705 (x2) Blanking Piece converts 3 to 2 point</p>	<p>IS941-4000504 (x2) IS945-928 (x2) IS941-00205 (x2) IS941-0203504 IS941-0201504 IS941-00705 Blanking Piece converts 3 to 2 point</p>	<p>IS941-4000504 (x2) IS945-928 (x2) IS941-00205 (x2) IS941-0201504 (x2) IS941-00705 (x2) Blanking Piece converts 3 to 2 point</p>
<p>TOUCH</p>	<p>IS942-30845VT IS942-41175VT IS941-00705 Blanking Piece converts 3 to 2 point</p>	<p>IS942-30845VT IS942-41175VT IS941-00205 IS941-0203504 IS941-00705 (x2) Blanking Piece converts 3 to 2 point</p>	<p>IS942-30845VT IS942-41175VT IS941-00205 IS941-0203504 IS941-00705 Blanking Piece converts 3 to 2 point</p>	<p>IS942-30845VT (x2) IS941-00705 (x2) Blanking Piece converts 3 to 2 point</p>
<p>ENDUR4NCE</p>	<p>IS941-4000R04 (x2) IS945-92R (x2) IS941-0020R IS941-0201R04 IS941-00707 Blanking Piece converts 3 to 2 point</p>	<p>IS941-4000R04 (x2) IS945-92R (x2) IS941-0020R (x2) IS941-0203R04 IS941-0201R04 IS941-00707 (x2) Blanking Piece converts 3 to 2 point</p>	<p>IS941-4000R04 (x2) IS945-92R (x2) IS941-0020R (x2) IS941-0203R04 IS941-0201R04 IS941-00707 Blanking Piece converts 3 to 2 point</p>	<p>IS941-4000R04 (x2) IS945-92R (x2) IS941-0020R (x2) IS941-0201R04 (x2) IS941-00707 (x2) Blanking Piece converts 3 to 2 point</p>



ISEO[®]
ULTIMATE ACCESS TECHNOLOGIES

PRESENTED BY



m.marcus
architectural hardware

M.Marcus Ltd. Unit 7, Narrowboat Way, Dudley. DY2 0XQ
Admin Tel: +44 1384 457900

Hardware Sales Tel: +44 1384 247844 Hardware Sales Fax: +44 1384 242252
Hardware Sales e-mail: sales@m-marcus.com

Electrical Sales Tel: +44 1384 247845 - Electrical Sales Fax: +44 1384 243312
Electrical Sales e-mail: electsales@m-marcus.com

Iseo Security Sales Tel: +44 1384 247833 - Iseo Sales Fax: +44 1384 253687
Iseo Sales e-mail: iseosales@m-marcus.com

Our Website: <https://www.m-marcus.com>

Follow us: @heritagebrass



We reserve the right to amend products & sizes without notice and all dimensions provided are approximate. Colours shown in this catalogue may vary slightly from actual product due to photographic and colour reproduction. All errors and omissions excepted.