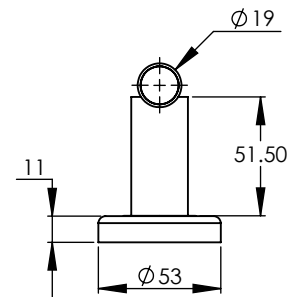
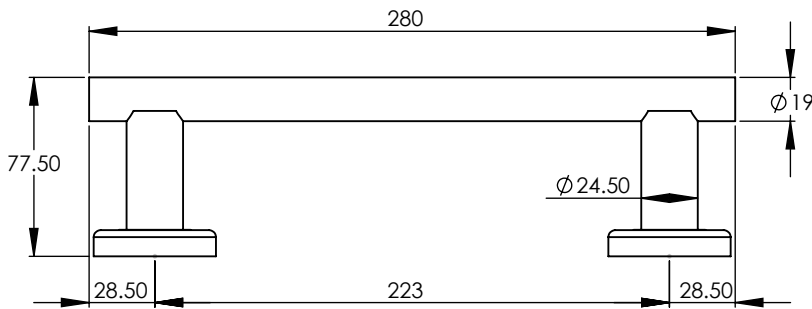


V2057 280 ~ 11" DOOR PULL HANDLE WITH BASE



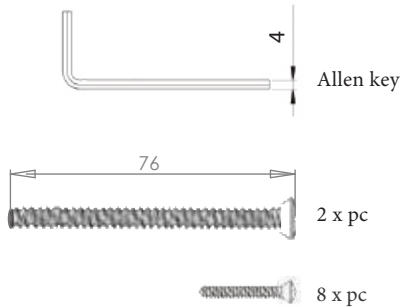
2

1



2 Dimensions: see the outlines given above

3



FINISHES

- ME Matt Bronze finish
- SE Satin Brass finish
- SN Satin Nickel finish
- AT Antique Brass finish
- PE Polished Brass finish
- PC Polished Chrome finish

Overview

1 Door pull handle illustrated

2 (General dimensions of door pull handle)

3 Supplied with: 8 x 19mm steel screws
2 x 63mm Allen screws
1 x 4mm Allen key

 M Marcus Ltd., Dudley

Product Code

V2057 280

Material

Solid Brass

Sizes shown are in mm and approximate. We reserve the right to amend where necessary and without any prior notice.