

PRESENTED BY



m.marcus  
architectural hardware

# Mechanical Cylinder

## KEYS, ACCESSORIES & SERVICES





# Pinning - Kits & Tools

IS-003000 5 Pin Pinning Kit  
IS-003040 R6-R11 Pinning Kit  
IS-003031 F6-R6 Pinning Kit



IS-003 101 Cylinder Support 5 Pin



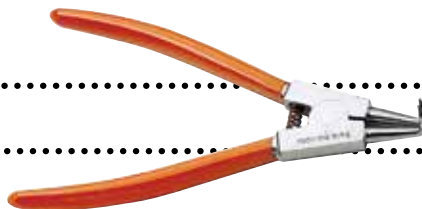
IS-003 102 Pin Loader 5 Pin



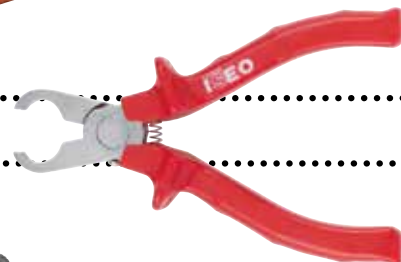
IS-003 103 Plug Guide 5 Pin



IS-003 104 Circlip Pliers All Product Ranges



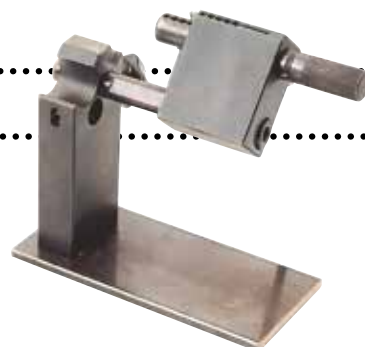
IS-003 105 Closing Pliers All Product Ranges



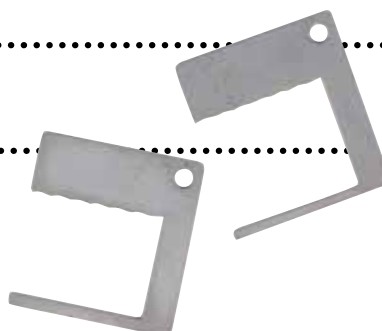
IS-003 107 Key Gauge 5 Pin



IS-003090 Pinning Jig R6/R11/R50 and F6





IS-003 111 Euro Profile pinning blade  
IS-003 112 Oval Profile pinning blade



# Pinning Components & Extra Keys

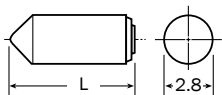
## F5 5 Pin

### CIRCLIPS

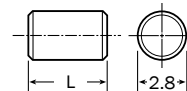
003 7011	Steel Circlip (250pcs)		250
003 7001	Brass Circlip (250pcs)		250

### BOTTOM PINS

003 2050	No 0	L = 5.0 mm	1,000
003 2054	No 1	L = 5.4 mm	1,000
003 2058	No 2	L = 5.8 mm	1,000
003 2062	No 3	L = 6.2 mm	1,000
003 2066	No 4	L = 6.6 mm	1,000
003 2070	No 5	L = 7.0 mm	1,000
003 2074	No 6	L = 7.4 mm	1,000
003 2078	No 7	L = 7.8 mm	1,000
003 2082	No 8	L = 8.2 mm	1,000



### QUANTITY

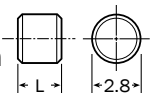


### TOP PINS

003 3030	Small Standard for Padlocks	L = 3.0 mm	1,000
003 3050	Standard	L = 5.0 mm	1,000

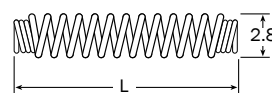
### MASTER WAFERS

003 9008	No 2	L = 0.8 mm	1,000
003 9016	No 4	L = 1.6 mm	1,000
003 9024	No 6	L = 2.4 mm	1,000
003 9032	No 8	L = 3.2 mm	1,000




### SPRINGS

003 8130	Brass	L = 13.0mm	1,000
----------	-------	------------	-------



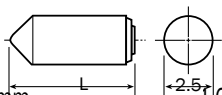
## R6 6 Pin

### CIRCLIPS

003 7011	Steel Circlip (250pcs)		250
----------	------------------------	---	-----

### BOTTOM PINS

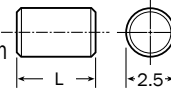
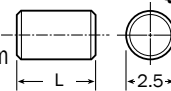
003 2151	No 0	L = 5.1 mm	1,000
003 2156	No 1	L = 5.6 mm	1,000
003 2161	No 2	L = 6.1 mm	1,000
003 2166	No 3	L = 6.6 mm	1,000
003 2171	No 4	L = 7.1 mm	1,000
003 2176	No 5	L = 7.6 mm	1,000



### QUANTITY

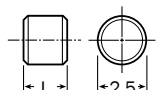
### TOP PINS

003 3150	Standard	L = 5.0 mm	1,000
003 4150	Mushroom	L = 5.0 mm	1,000



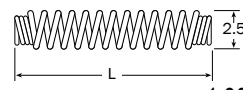
### MASTER WAFERS

003 9110	No 2	L = 1.0 mm	1,000
003 9120	No 4	L = 2.0 mm	1,000



### SPRINGS

003 8130	Brass	L = 13.0mm	1,000
----------	-------	------------	-------



## FURTHER COMPONENTS

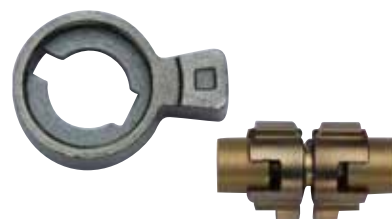
### TEN TOOTH COG

IS-003271	Double Cylinder
IS-KN1175S	Thumbturn Version



### Double Clutch Function CAM

IS-003222	35mm
IS-003220	30mm
Available on Double Cylinder only	



These functions can be included on assembled cylinders if required. Enquire for details



## Security Escutcheon

IS-SSEDKC TS007 2 STAR Security Escutcheon

(Please note: This product **cannot** be used with **R50** keys)

### F6 Extra<sup>S</sup>



+



=

### Security Escutcheon

**Premier Security Protection**

### F6 Extra<sup>S<sup>3</sup></sup>



+



=

### Security Escutcheon

**Supreme Security Protection**

# Key Blanks & Accessories

## **F5** 5 Pin keys

020 259 Key Blanks For Euro & Oval Profile  
Cylinders & Padlocks 45mm

020 409 Key Blanks For Roller Shutters

020 259DK F5 Differ Key

020 259MK F5 Master Key



## **F6 Extra** Keys

020 609.U F6 Key Blank

020 609DK F6 Differ Key

020609MK F6 Plus Master Key



## **R6** keys

IS-020839.U R6 Key Blank (Key bow blank one side)

IS-020839DK R6 Differ Key

IS-020839MK R6 Master Key



## **R6 Plus** keys

IS020819 SPECIAL

IS020819DK Differ Key



## **R11** Keys



020 9001 R11 Key Blank

020 9001DK R11 Differ Key

020 9001MK R11 Master Key



## **R50** Keys



020 9901DK R50 Differ Key

020 9901MK R50 Master Key



## **R700 S<sup>3</sup>** Keys

IS020919.2U R700 S3 Key Blank

IS020919.2 DK R700 S3 Differ Key

IS020919.2 MK R700 S3 Master Key



## **R500 SPI** Keys

IS-80RYR0000DK R500 SPI Differ Key Extra

IS-80RYR0000MK R500 SPI Master Key Extra

IS-80RYR0000.U R500 Key Blank\*



\* GENUINE R500 KEY BLANKS ARE ONLY AVAILABLE TO REGISTERED KEY CENTRES

## R500 SPI KEY CAPS



IS-044340.01	Key Cap - <b>Orange</b>
IS-044340.02	Key Cap - <b>Pink</b>
IS-044340.03	Key Cap - <b>Green</b>
IS-044340.04	Key Cap - <b>Yellow</b>
IS-044340.05	Key Cap - <b>Blue</b>



### F5 Key Identifiers

IS-8008EFSR	Red
IS-8008EFSB	Blue
IS-8008EFSY	Yellow



### F6 Extra Key Identifiers

IS-8004EFSR	Red
IS-8004EFSB	Blue
IS-8004EFSY	Yellow



### R6 R500 R700 S³ Key Identifiers

IS-8004FSR	Red
IS-8004FSB	Blue
IS-8004FSY	Yellow



### R6 R700 S³ Key Caps

IS-044180	Nylon Blue Key Cap - Covered
-----------	------------------------------

## ISEO Matt Black Finish

(Special Order)\*



- 3 Star BSI (S³) are unsuitable for special order colour finishes. \*Please enquire for details.
- Order using code **IS-SERVCOL** in addition to the regular product code.
- Lead time for Matt Black finish 4 to 6 weeks from the date of ordering.
- Please be aware that colour shown here is representative only, and M.Marcus Ltd., do not guarantee colour match as finishes are designed to be 'scheme complimentary' in nature.
- For cylinder orders less than 20 pieces an additional delivery surcharge will be applicable.



# Thumbturn Pieces

POLISHED NICKEL

POLISHED BRASS

SATIN NICKEL



IS8289-TT3



IS8289-TT7

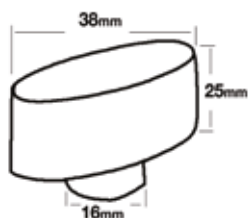


IS8289-TT9

## CONCAVE TURN

### CODE

IS8289-TT3 Polished Nickel  
IS8289-TT7 Polished Brass  
IS8289-TT9 Satin Nickel



IS8219-TT3



IS8219-TT7



IS8219-TT9

## OVAL TURN

### CODE

IS8219-TT3 Polished Nickel  
IS8219-TT7 Polished Brass  
IS8219-TT9 Satin Nickel



IS8229-TT3



IS8229-TT7

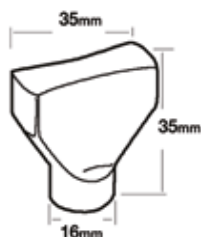


IS8229-TT9

## ROUND TURN

### CODE

IS8229-TT3 Polished Nickel  
IS8229-TT7 Polished Brass  
IS8229-TT9 Satin Nickel



IS8259-TT3



IS8259-TT7



IS8259-TT9

## FLAT TURN

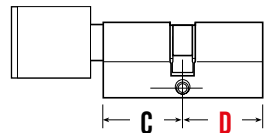
### CODE

IS8259-TT3 Polished Nickel  
IS8259-TT7 Polished Brass  
IS8259-TT9 Satin Nickel



## Anti-Barrier Cylinder & Turn

Anti-Barrier Turn - Turn system which enables access from outside with a key, even when the turn is being held inside



INCLUDES 3 KEYS WITH CYLINDER TO DIFFER. 2 KEYS MASTER KEYED AND KEYED ALIKE



### F5

C D

IS8244-	30	30	9
IS8244-	35	35	9
IS8244-	40	40	9

### F6 Extra

C D

IS82F644-	30	30	9
IS82F644-	35	35	9
IS82F644-	40	40	9

### R6

C D

IS8844-	30	30	9
IS8844-	35	35	9
IS8844-	40	40	9

### R500 Spi

C D

IS8P44-	30	30	9
IS8P44-	35	35	9
IS8P44-	40	40	9

## Thumbturn both sides



## Cylinder pull

suitable for ISEO Rim Cyinders



IS-V930-PB Cylinder Pull  
Polished Brass

IS-V930-SC Cylinder Pull  
Satin Chrome

# What is Master Keying?

- A master key system enables the owner/manager of a building (or group of buildings) to control the access rights of inhabitants and visitors to their property.
- Master key systems include the option of a master key which may allow access to every part of the property, while individuals may be issued with a key which allows them access to their own room/area, and shared areas of the building.
- Any building or group of buildings can be master keyed, from a basic system such as having a home secured all on one key, to the more complex systems where several buildings are secured on one master key, with each individual room also operating on an individual key.
- Master key systems are produced by software using mathematical algorithms to generate a set of cylinder pinning and key cutting information. The software calculates the system based on the data entered by your M. Marcus technical advisor in relation to the design of the suite. This is why it is so important that we get ALL of the relevant information about the suite before it is designed.
- Master Key systems are now calculated and generated within our Security Service centre in Dudley

## Factors to be Considered

Master key systems are designed using mathematical algorithms, and no two sets of pinning will be the same. Therefore it may be possible to get the maximum 60000 differs from one suite, but only 50000 differs from another. This is because all suites are generated in the first instance from a master key biting combination. Some biting combinations will allow for more differs than others due to the number of odd/even cuts and the size of the steps between cuts.

Your first order for a master key suite may only call for a small number of cylinders, but as the building becomes extended or the room designations change, you may need to add more cylinders, or include the use of a common entrance. You may even need to add another building to operate under the same master key.

We would need to know these future plans (to the best of your knowledge) at the point of suite design, otherwise such extensions may not be possible.

The addition of subs and common entrances on your master key suite will decrease the maximum number of differs possible on the suite. Your Territory Manager or technical advisor at M. Marcus will be able to talk through the options with you on larger, more complex suites.\*

\* Common entrance cylinders contain more master wafers than a standard differ cylinder. They are also used more frequently in most instances. The increase in moving parts in each pin chamber, along with the additional use can result in common entrance cylinders needing to be maintained/replaced more frequently than a standard differ cylinder.

## Important Information & key product facts

- We recommend that in order to maintain the smooth operation of your cylinder lock you lubricate from time to time using the following product (ISEO cylinders only): Interflon Finlube TF. There is no specific timed requirement for lubricating cylinders as atmospheric differences can vary from site to site. However, we recommend this particular lubricant be used should you feel that the cylinder operation is becoming less smooth.
- Master Keyed and Keyed Alike product lead time is generally 3-5 working days from the date of receipt of official purchase order.
- Additional keys/cylinders for previously manufactured systems will only be made upon receipt of a completed official letter of authority form, provided by M.Marcus Ltd, upon request. Where end users require alternative supply routes other than the originator.
- Although M.Marcus Ltd maintain a thorough and concise record of previous Master Key suites ordered for a maximum period of ten years from original date, we do not give a guarantee that suite extensions or additional cylinders/keys can be supplied after the original suite has been written.

## Ordering your Cylinders

To order your cylinder please insert prefix code. For example: **IS8209**

followed by the size: **C** / **D**  
35 35

and then the finish: 9 = Nickel, 7 = Brass

Resulting in an order code - for the **F5** Double Differ Cylinder 70mm in Nickel finish in this example:

**IS8209-3535 9**

If you then require a Masterkeyed version or Keyed Alike version: Please use the suffix **MK** or **KA**

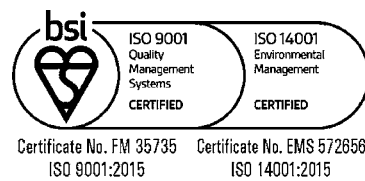
Using the example code above that would give:

**IS8209-3535 9 MK** [Masterkeyed]

**IS8209-3535 9 KA** [Keyed Alike]



QUALITY MANAGEMENT ENVIRONMENTAL MANAGEMENT





**ISEO**<sup>®</sup>  
ULTIMATE ACCESS TECHNOLOGIES

**PRESENTED BY**



**m.marcus**  
architectural hardware

**M.Marcus Ltd.** Unit 7, Narrowboat Way, Dudley. DY2 0XQ  
Admin Tel: +44 1384 457900

Hardware Sales Tel: +44 1384 247844 Hardware Sales Fax: +44 1384 242252  
Hardware Sales e-mail: sales@m-marcus.com

Electrical Sales Tel: +44 1384 247845 - Electrical Sales Fax: +44 1384 243312  
Electrical Sales e-mail: electsales@m-marcus.com

Iseo Security Sales Tel: +44 1384 247833 - Iseo Sales Fax: +44 1384 253687  
Iseo Sales e-mail: iseosales@m-marcus.com

Our Website: <https://www.m-marcus.com>

Follow us: @heritagebrass



We reserve the right to amend products & sizes without notice and all dimensions provided are approximate. Colours shown in this catalogue may vary slightly from actual product due to photographic and colour reproduction. All errors and omissions excepted.