

THE *Executive* COLLECTION

www.m-marcus.com



Bespoke Decorative Electrical Wiring Accessories



EXECUTIVE RANGE

Screwless Square Plate

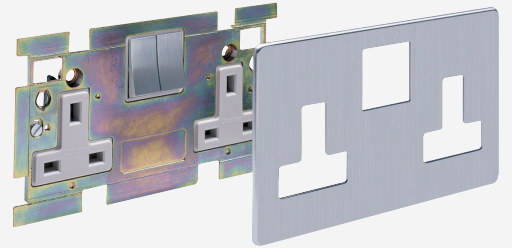
This high end range of decorative electrical wiring accessories enables the customer to mix and match the finishes of the frame, front plate and insert as desired. Heritage Brass has found this concept particularly popular with the hospitality and high end residential market as it provides a unique personalised touch.

Features:

- Screwless front plates
- Square corners
- Mix and match finishes of frame, front plate and insert as desired
- Grid system available

Sizes:

- Single 92 x 92 mm
- Double 92 x 152 mm



More plate finishes and combinations in the Executive Range can be found on our website: www.m-marcus.com.



White Plate with Polished Chrome frame EX20

Top: 3 Gang Dolly Switch

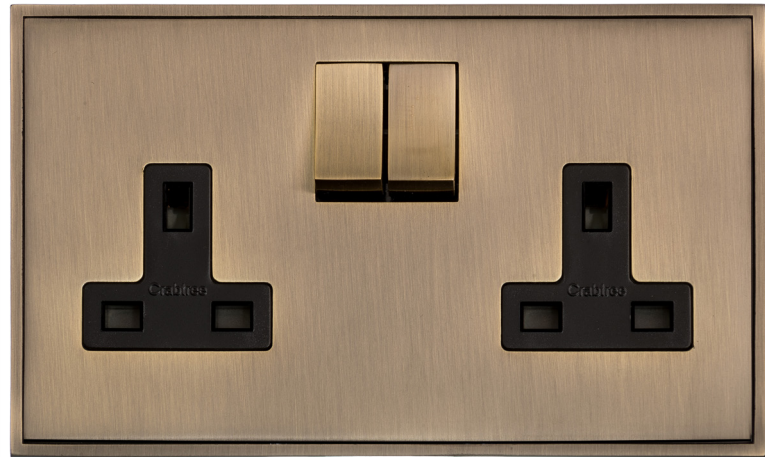
Bottom: 1 Gang Rocker Switch, Twin Socket and 1 Gang Dimmer



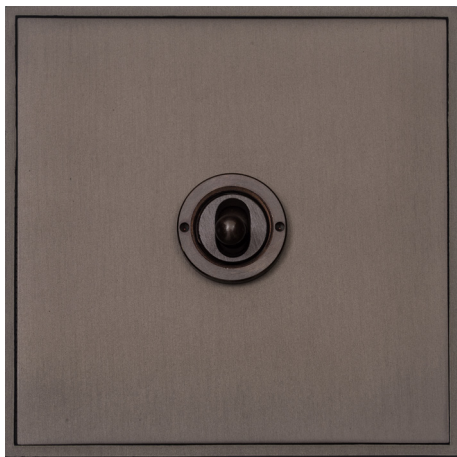
White Plate
with Polished
Brass and
White Trim
EX10



Black Nickel
with Polished
Chrome and
Black Trim
EX26



All Antique
Brass with
Black Trim
EX91



All Matt
Bronze with
Black Trim
EX09

Heritage Brass

www.m-marcus.com

Tel: 01384 247 845

EXECUTIVE RANGE

June 2019 Price List

White Plate with
Polished Chrome



Black Nickel with
Polished Chrome



White Plate with
Polished Brass



All Matt Bronze



All Antique Brass



Minimum Box Depth

10 AMP ROCKER SWITCHES		Code	Code	Code	Code	Code	£	
	1 Gang 2 Way Switch	EX20.500.PCW	EX26.500.PCBK	EX10.500.PBW	EX09.500.DBZ	EX91.500.ABBK	29.98	35
	2 Gang 2 Way Switch	EX20.510.PCW	EX26.510.PCBK	EX10.510.PBW	EX09.510.DBZ	EX91.510.ABBK	39.28	35
	3 Gang 2 Way Switch	EX20.520.PCW	EX26.520.PCBK	EX10.520.PBW	EX09.520.DBZ	EX91.520.ABBK	49.68	35
	4 Gang 2 Way Switch	EX20.530.PCW	EX26.530.PCBK	EX10.530.PBW	EX09.530.DBZ	EX91.530.ABBK	59.68	35
	1 Gang Intermediate	EX20.501.PCW	EX26.501.PCBK	EX10.501.PBW	EX09.501.DBZ	EX91.501.ABBK	34.98	35
13 AMP SWITCHED SOCKETS								
	Single 13 AMP Socket	EX20.240.PCW	EX26.240.PCBK	EX10.240.PBW	EX09.240.DBZ	EX91.240.ABBK	34.96	35
	Double 13 AMP Socket	EX20.250.PCW	EX26.250.PCBK	EX10.250.PBW	EX09.250.DBZ	EX91.250.ABBK	49.96	35
	2 Gang Switch with USB Charger	EX20.255.PCW	EX26.255.PCBK	EX10.255.PBW	EX09.255.DBZ	EX91.255.ABBK	69.96	35
13 AMP FUSED SPUR UNITS (CONNECTION UNITS)								
	Unswitched Spur	EX20.650.W	EX26.650.BK	EX10.650.W	EX09.650.BK	EX91.650.BK	29.98	35
	Switched Spur	EX20.235.PCW	EX26.235.PCBK	EX10.235.PBW	EX09.235.DBZ	EX91.235.ABBK	40.00	35
	Switched with neon	EX20.236.PCW	EX26.236.PCBK	EX10.236.PBW	EX09.236.DBZ	EX91.236.ABBK	47.96	35
	Switched with neon/cord	EX20.238.PCW	EX26.238.PCBK	EX10.238.PBW	EX09.238.DBZ	EX91.238.ABBK	49.96	35
20 AMP 2 WAY DOLLY SWITCHES								
	1 Gang Dolly Switch	EX20.2400.PC	EX26.2400.PC	EX10.2400.PB	EX09.2400.DBZ	EX91.2400.AB	44.47	35
	2 Gang Dolly Switch	EX20.2410.PC	EX26.2410.PC	EX10.2410.PB	EX09.2410.DBZ	EX91.2410.AB	61.18	35
	3 Gang Dolly Switch	EX20.2420.PC	EX26.2420.PC	EX10.2420.PB	EX09.2420.DBZ	EX91.2420.AB	91.54	35
	4 Gang Dolly Switch	EX20.2430.PC	EX26.2430.PC	EX10.2430.PB	EX09.2430.DBZ	EX91.2430.AB	95.29	35
	1 Gang Intermediate	EX20.2401.PC	EX26.2401.PC	EX10.2401.PB	EX09.2401.DBZ	EX91.2401.AB	49.47	35
2 WAY PUSH ON/OFF DIMMER SWITCHES								
	1 Gang Dimmer (250 watts)	EX20.560.250	EX26.560.250	EX10.560.250	EX09.560.250	EX91.560.250	44.28	35
	1 Gang Dimmer (400 watts)	EX20.560.400	EX26.560.400	EX10.560.400	EX09.560.400	EX91.560.400	45.47	35
	2 Gang Dimmer (250 watts)	EX20.570.250	EX26.570.250	EX10.570.250	EX09.570.250	EX91.570.250	59.18	35
	2 Gang Dimmer (400 watts)	EX20.570.400	EX26.570.400	EX10.570.400	EX09.570.400	EX91.570.400	61.18	35
	3 Gang Dimmer (250 watts)	EX20.580.250	EX26.580.250	EX10.580.250	EX09.580.250	EX91.580.250	91.52	35
	3 Gang Dimmer (400 watts)	EX20.580.400	EX26.580.400	EX10.580.400	EX09.580.400	EX91.580.400	94.54	35
	4 Gang Dimmer (250 watts)	EX20.590.250	EX26.590.250	EX10.590.250	EX09.590.250	EX91.590.250	95.20	35
	4 Gang Dimmer (400 watts)	EX20.590.400	EX26.590.400	EX10.590.400	EX09.590.400	EX91.590.400	99.20	35
TRAILING EDGE DIMMERS								
	1 Gang Trailing Edge	EX20.560.TED	EX26.560.TED	EX10.560.TED	EX09.560.TED	EX91.560.TED	64.28	35
	2 Gang Trailing Edge	EX20.570.TED	EX26.570.TED	EX10.570.TED	EX09.570.TED	EX91.570.TED	89.18	35
	3 Gang Trailing Edge	EX20.580.TED	EX26.580.TED	EX10.580.TED	EX09.580.TED	EX91.580.TED	136.52	35
	4 Gang Trailing Edge	EX20.590.TED	EX26.590.TED	EX10.590.TED	EX09.590.TED	EX91.590.TED	155.20	35
MISCELLANEOUS								
	1 Gang Flex Outlet	EX20.509.W	EX26.509.BK	EX10.509.W	EX09.509.BK	EX91.509.BK	28.60	35

Heritage Brass

www.m-marcus.com

Tel: 01384 247 845

EXECUTIVE RANGE

Concealed fixing

White Plate with
Polished Chrome



Black Nickel with
Polished Chrome



White Plate with
Polished Brass



All Matt Bronze



All Antique Brass



Minimum Box Depth

20 AMP DOUBLE POLE SWITCHES		Code	Code	Code	Code	Code	£	
	20 Amp D.P. Switch	EX20.505.PCW	EX26.505.PCBK	EX10.505.PBW	EX09.505.DBZ	EX91.505.ABBK	32.28	35
	20 Amp D.P. with neon	EX20.506.PCW	EX26.506.PCBK	EX10.506.PBW	EX09.506.DBZ	EX91.506.ABBK	34.28	35
45 AMP COOKER SWITCHES								
	45A Cooker Switch with neon	EX20.263.PCW	EX26.263.PCBK	EX10.263.PBW	EX09.263.DBZ	EX91.263.ABBK	48.18	48
	45A Cooker Unit/13A Socket	EX20.262.PCW	EX26.262.PCBK	EX10.262.PBW	EX09.262.DBZ	EX91.262.ABBK	62.90	48
TRIPLE POLE FAN ISOLATING SWITCHES								
	6 AMP Triple Fan Isolator Switch	EX20.2990.PCW	EX26.2990.PCBK	EX10.2990.PBW	EX09.2990.DBZ	EX91.2990.ABBK	39.80	35
ROUND PIN SOCKETS UNSWITCHED								
	5 Amp 3 Pin Socket	EX20.282.W	EX26.282.BK	EX10.282.W	EX09.282.BK	EX91.282.BK	39.60	35
SHAVER SOCKET DUAL OUTPUT								
	Output Voltage 110/240V	EX20.285.W	EX26.285.BK	EX10.285.W	EX09.285.BK	EX91.285.BK	94.00	57
TV / COAXIAL SOCKETS								
	Single Non-Isolated	EX20.610.W	EX26.610.BK	EX10.610.W	EX09.610.BK	EX91.610.BK	29.96	35
	Single Isolated	EX20.610.W-I	EX26.610.BK-I	EX10.610.W-I	EX09.610.BK-I	EX91.610.BK-I	31.78	35
	Twin Non-Isolated	EX20.681.W	EX26.681.BK	EX10.681.W	EX09.681.BK	EX91.681.BK	36.52	35
	TV/FM Dplxed	EX20.680.W-DIP	EX26.680.BK-DIP	EX10.680.W-DIP	EX09.680.BK-DIP	EX91.680.BK-DIP	39.70	35
SATELLITE SOCKETS								
	1 Gang Satellite	EX20.605.W	EX26.605.BK	EX10.605.W	EX09.605.BK	EX91.605.BK	29.96	35
	TV/ Satellite Socket	EX20.615.W	EX26.615.BK	EX10.615.W	EX09.615.BK	EX91.615.BK	36.52	35
	TV/FM/Sat1/Sat2 Quad	EX20.618.W	EX26.618.BK	EX10.618.W	EX09.618.BK	EX91.618.BK	42.30	35
TELEPHONE & DATA SOCKETS								
	1 Gang Secondary Line	EX20.691.W-S	EX26.691.BK-S	EX10.691.W-S	EX09.691.BK-S	EX91.691.BK-S	30.24	35
	1 Gang Master Line	EX20.691.W-M	EX26.691.BK-M	EX10.691.W-M	EX09.691.BK-M	EX91.691.BK-M	32.26	35
	2 Gang Secondary Line	EX20.692.W-S	EX26.692.BK-S	EX10.692.W-S	EX09.692.BK-S	EX91.692.BK-S	41.60	35
	2 Gang Master Line	EX20.692.W-M	EX26.692.BK-M	EX10.692.W-M	EX09.692.BK-M	EX91.692.BK-M	42.60	35
	1 Gang RJ45	EX20.691.W-RJ45	EX26.691.BK-RJ45	EX10.691.W-RJ45	EX09.691.BK-RJ45	EX91.691.BK-RJ45	31.52	35
	2 Gang RJ45	EX20.692.W-RJ45	EX26.692.BK-RJ45	EX10.692.W-RJ45	EX09.692.BK-RJ45	EX91.692.BK-RJ45	41.60	35
BLANKING PLATES								
	1 Gang Blank Plate	EX20.630	EX26.630	EX10.630	EX09.630	EX91.630	19.94	-
	2 Gang Blank Plate	EX20.640	EX26.640	EX10.640	EX09.640	EX91.640	23.74	-
EURO MODULE PLATES								
	1 Module Euro Plate	PL.EX20.2691.G	PL.EX26.2691.G	PL.EX10.2691.G	PL.EX09.2691.G	PL.EX91.2691.G	23.94	-
	2 Module Euro Plate	PL.EX20.2692.G	PL.EX26.2692.G	PL.EX10.2692.G	PL.EX09.2692.G	PL.EX91.2692.G	23.94	-
	4 Module Euro Plate	PL.EX20.2694.G	PL.EX26.2694.G	PL.EX10.2694.G	PL.EX09.2694.G	PL.EX91.2694.G	30.74	-